

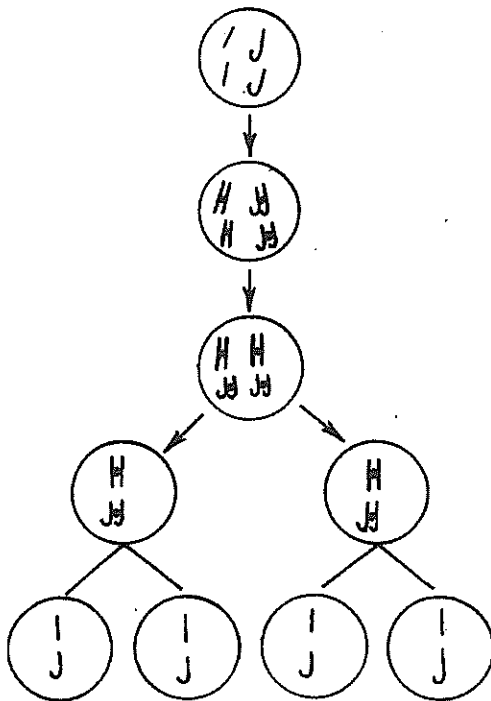
Name:

Date:

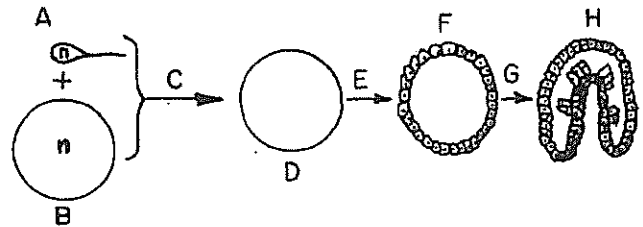
Early Embryonic Development Worksheet

1. The formation of a tetrad during meiosis occurs as a result of

2. Which process is represented by the diagram below?

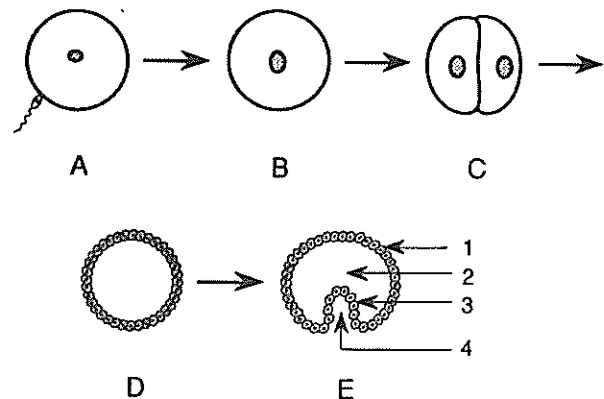


3. Base your answer on the diagram below which represents some events in the reproduction of a typical vertebrate and-on your knowledge of biology.



The process represented by arrow C is known as

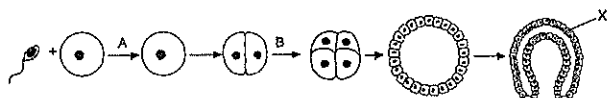
Base your answers to questions 4 and 5 on the diagram below and on your knowledge of biology. The diagram represents some of the stages in the reproduction and development of a vertebrate.



4. The first stage containing the diploid number of chromosomes is represented by letter

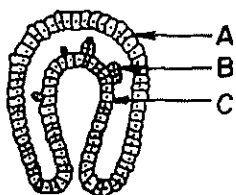
5. In the diagram labeled *E*, the layer that develops into the nervous system is indicated by number

6. Base your answer on the diagram below and on your knowledge of biology.



Which process normally occurs at arrow *B*?

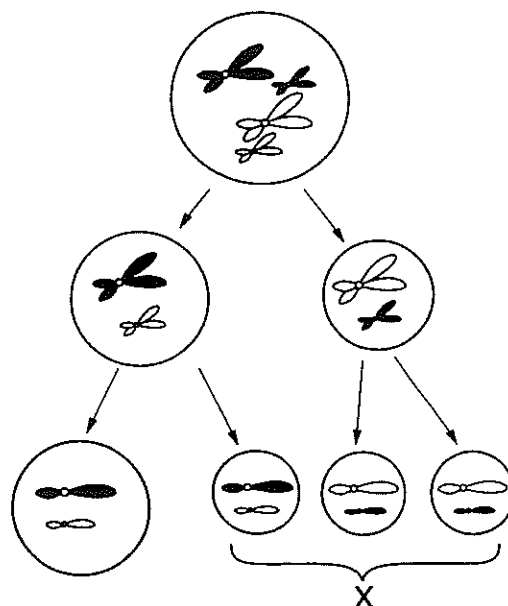
Base your answers to questions 7 and 8 on the diagram below of a stage in the development of an organism and on your knowledge of biology.



7. The layer of cells that is labeled *B* will most likely form

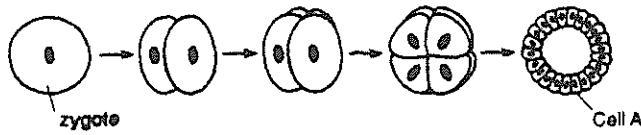
8. The unspecialized cells of *A*, *B*, and *C* become specialized cells by the process of

9. The diagram below represents a reproductive process.



10. The chromosome number of a cell produced by mitotic cell division is represented by $2n$. If that cell had been produced by meiotic cell division, its chromosome number would be represented by

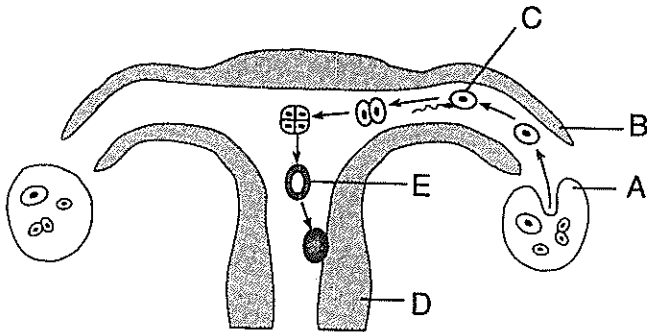
11. Base your answer on the diagram below and on your knowledge of biology.



The process illustrated by the diagram is known as

12. Which statement best describes chromosomes that contain genes for the same characteristics?

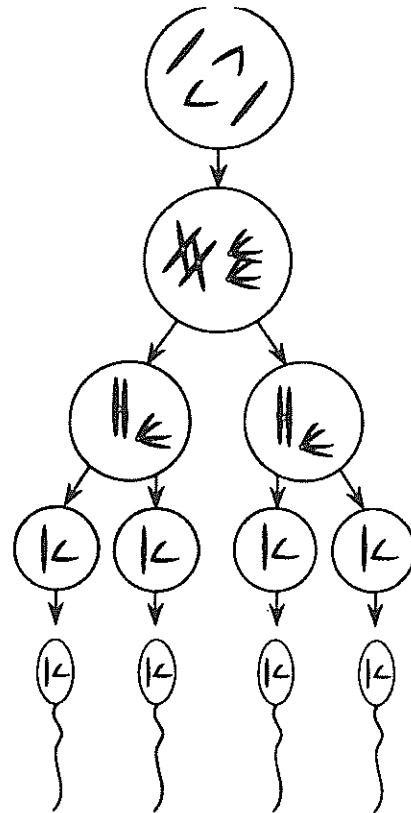
13. Base your answer on the diagram below which represents events associated with reproduction in a human female and on your knowledge of biology.



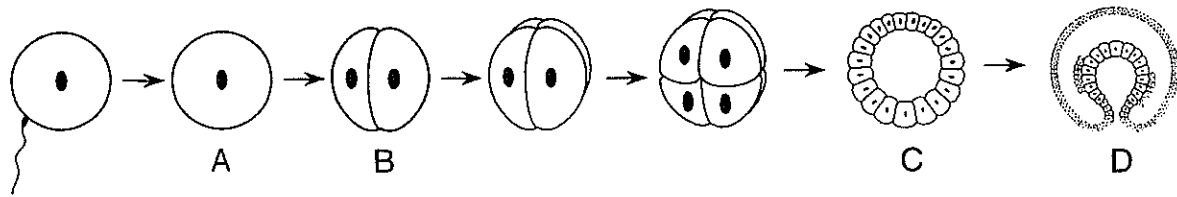
Which structure represents a blastula?

14. During meiotic cell division, the process in which homologous pairs of chromosomes separate and move apart is known as

15. Which process is represented by the diagram below?



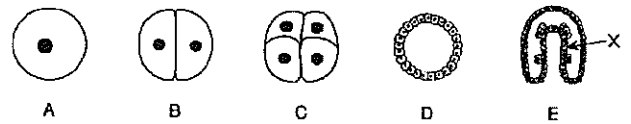
16. Base your answer on the diagram below, which represents some stages in the development of an embryo, and on your knowledge of biology.



Which stage represents a blastula?

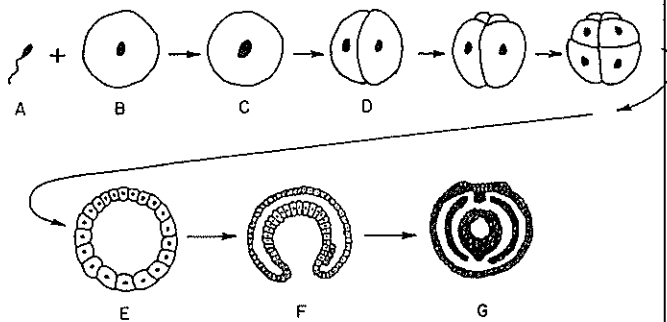
17. In most multicellular animals, meiotic cell division occurs in specialized organs known as

19. Base your answer on the diagram below and your knowledge of biology.



Letter X indicates the

18. Base your answer on the diagram below of some stages in the development of a vertebrate embryo and on your knowledge of biology.



Which structures resulted directly from mitotic cell division?

20. Which process normally occurs during meiosis, but *not* during mitosis?