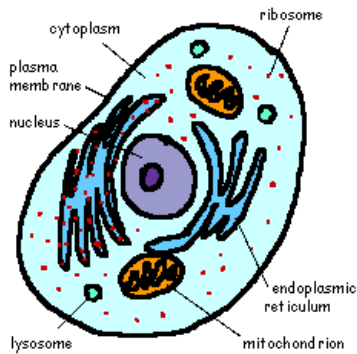


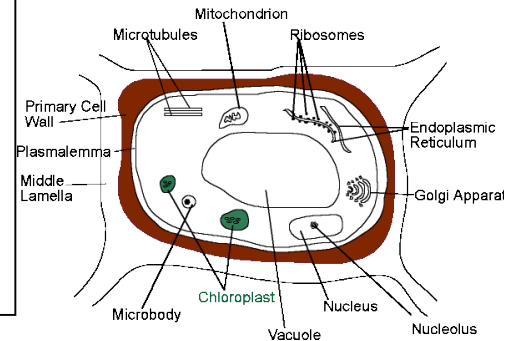
Name _____

Unit 3: Cells & Cell Transport



Big Ideas:

- How do cell organelles carry out life functions?
- How can cell organelles be recognized?
- How do different cell types vary from each other?
- How are materials transported into and out of cells?



Key Terms/Ideas:

<ul style="list-style-type: none"> • Cell theory • Exceptions to Cell Theory • Levels of organization • Eukaryote • Prokaryote • Organelles • Nucleus • Nucleolus • Golgi apparatus 	<ul style="list-style-type: none"> • Endoplasmic reticulum • Ribosome • Cytoplasm • Cell wall • Centrioles • Mitochondria • Lysosome • Nuclear membrane • Vacuole • Chloroplast 	<ul style="list-style-type: none"> • Plasma membrane • Fluid mosaic model • Selective Permeability • Passive transport • Active transport • Diffusion • Osmosis • Gradient • Transport proteins • Receptor molecules
--	---	--

HW #	Assignment	Due Date
9	Read Section 7.3 (Eukaryotic Cell Structure) and answer Section Assessment #1-6 on page 187	
10	Read Section 7.2 (The Plasma Membrane) and answer Section Assessment #1-5 on page 178	
11	Vocabulary Review on page 192 #1-5	
12	Understanding Key Concepts on page 192 #6-12	
13	Multiple Choice on page 193 # 21-27	

Please remember to...

- Place a proper heading on all HW assignments
 - Full Name, Date, Assignment #
- Answer all questions in full and complete sentences
- Write out all multiple choice questions and correct answers